

LitePOWER®

Movie Quiet® 220KW Generator (1800 Amps)

Patents Pending



The LitePOWER Movie Quiet® 220KW Generator is the most technologically advanced generator we offer. Options like **single button paralleling** and a **secondary containment rupture basin** make it ready for live events. 1800 amps of reliable power in a traditional sized housing. Why settle for anything less?

As with all LitePOWER products, the 220KW Generator is automated for simple, worry-free operation. We use only the highest quality components from the leading suppliers such as Cummins, Newage, Marathon, and Controls, Inc.

Got a problem or a question? Service, operation and technical information about our LitePOWER products is available on our website www.litepower.com. Still got a question? Our toll free service number is available 24/7. **800 474-8111**.

Burrell Enterprises, Inc.

toll free: (800) 474-8111 • www.litepower.com

November 2010

Movie Quiet® 220KW Generator

1800 Amps @ 120 Volts

All LitePOWER generators are available in 50hz configurations, please inquire for specifications

Specifications

Engine

Cummins QSB7-G5-NR3 Charge Air Cooled 324 bhp diesel engine. Meets EPA Mobile Off Highway Tier 3, California SCAQMD and CARB permitting requirements. Equipped with Envirogard® filter for crankcase breather and oversized air filter for clean operation in and out of the engine.

Pre-Lubrication System

Engine oil pressure established prior to start-up for longer engine life.

Frequency Control

Electronic engine management ensures precise frequency control. Meets HMI lighting requirements.

Controller

Engine control and monitoring, AC monitoring, fault and pre-fault systems are provided by a microprocessor-based controller. All readouts are digital and are listed below. Weatherproof glass cover.

Monitoring

In addition to our standard LitePOWER engine and generator display, we've added a large redundant generator output display which has large LED characters that are bright enough to be viewed in direct sunlight.

Small Standard Display

AC Voltage - All Legs
Amperage - All Legs
Frequency - All Legs
Oil Pressure
Water Temperature
Battery Voltage
Fuel Level
Time To Next Service

Faults and Pre-Faults

Oil Pressure Fault/Pre-Fault
Water Temp Fault/Pre-Fault
Over Crank Fault
Over Speed Fault
Low Fuel Fault and Pre-Fault
Low Battery Pre-Fault
Defective Oil Sending Unit Pre-Fault
Defective Water Sending Unit Pre-Fault

Large Display

AC Voltage - Selectable
Amperage - Leg 1
Amperage - Leg 2
Amperage - Leg 3
Frequency - All Legs

PMG Generator

Stamford/Newage UCDI274J/WDG 311 with PMG. Low Wye (120/208) 240KW. Hi Wye (277/480) 240KW. ZigZag (120/240) 160KW. PMG provides constant excitation under all conditions. 2/3 pitch windings avoid excessive neutral currents. CSA listed.

Voltage Regulator

MX321 automatic voltage regulator with remote voltage adjustment. Mounted in its own housing with single plug-in connection. Set-up and operating instructions printed on cover. Features include:

- Three Phase Sensing for highly unbalanced or non-linear loads
- Isolation Transformers
- Under frequency roll off
- Voltage dip adjustment
- Droop adjustment
- Trim adjustment

Circuit Breaker

2 - 400 amp breakers, each with its own color coated output panel. Weatherproof glass cover. UL and CSA listed.

Electrical Connection

USA - 22 hole Cam-Lok - E1016 panel includes 4 male grounds, 4 female grounds, 8 neutral, 4 leg one, 4 leg two and 4 leg three. Convenience outlets: two Edison 20A duplex and one 100A Union connector with separate breakers.

CANADA - Cam-Loc 1016 replaced with 400A Ball Nose Connectors, Union connector replaced with 65A Joy connector. UL and CSA listed.

Lifting Devices

Top mounted lifting hooks allow crane lifting without damage to generator. Separate lifting holes allow for balance of generator only or generator and trailer combination. Removable for height reduction.

Optional Accessories

Hi Wye/Low Wye Switch

Change from 120/208 to 277/480 with a flip of a single switch. Includes computerized over current protection and shunt trips in breakers.

Paralleling System with Vacuum Contactor

"The most advanced, comprehensive paralleling solution available today." Four functions in one:

- Display and Programming Panel
- Isochronous Load Sharing
- Auto-Synchronizer
- Load Management

Package includes vacuum contactor and all components for paralleling. Twin-pack and tri-pack configuration accomplished without external common buss.

Remote Annunciator

Remote monitoring of engine and generator via cable. Operates up to 1700 yards. Includes 50' cable.

Remote Annunciator with Remote Start

Provides remote monitoring of engine/generator and remote start/stop.

Electronic Service Kit

Provides total redundancy of all electronic parts. Each component plugs in and requires only simple hand tools to install. Includes:

- Engine/Generator Board Set
- Plug-in Spare Voltage Regulator
- Magnetic Pick-up
- Voltage Adjust Pot

Trailer with 200 Gallon Fuel Tank

2 Dexter Torflex axles, 16" aluminum 5 spoke wheels. E-rated tires, surge hydraulic brakes with LitePOWER Brake Retarder or Electric Brakes, 3 position coupler with your choice of 2-5/16" ball or drawbar (for Pintle Hook), DOT lighting and markings. 13200 lbs. (6000 kg) GVWR.

Hours of Running Time (200 Gallon Tank)

Load	Time
25%	43:30
50%	25:30
75%	18:00
100%	13:45

Dimensions

Generator: L 96" W 48" H 84"
Generator, 200 tank, trailer: L 187" W 96" H 108"

Will fit inside of common 110" trailer. Needs no specialized equipment to haul.

Weight

Generator (wet-no tank) 6400 lbs. (2909 kg)
Generator, LitePOWER Trailer and 200 Gallons of fuel 9970 lbs. (4532 kg)

Trailer with Secondary Containment Rupture Basin

Same as above with addition of our LitePOWER Integrated Rupture Basin. Large enough to contain all generator fluids including fuel, lube oil and coolant.

Noise Level

52 dB(A) @ 50 feet.

Unique Features of the LitePOWER 220KW Generator

220KW / 1800 Amps

All this power in the traditional housing size. Generator weighs 6400 pounds (2909 kg) by itself. With trailer and 200 gallons of fuel, it weighs less than 10000 pounds (4536 kg). The generator and trailer are small enough to roll into a conventional trailer with 110-inch height.

Top Mounted Lift Hooks

Made from 5/8-inch steel plate. Does not require a spreader to lift generator (rear hole) or generator and trailer (front hole). Can be removed or inverted for top clearance.

Sub-Frame

Engine and alternator are mounted to a structural sub-frame that can be removed readily for major engine overhaul or replacement. "In-frame" overhauls can be done in the housing. Lower panels under engine are removable.

Pre-Lubrication System

Engine oil pressure is established prior to engine start-up for longer engine life. Totally automated.

Electric Pump For Oil Change

The pre-lube pump can also be used to remove the oil from the engine. Just open the shut-off valve, take the cap off of the drain hose and push the button. Oil is removed in less than a minute!

Removable Doors and Panels

Doors, outside panels and inside panels can be removed in minutes for total access to engine and alternator for major servicing and repairs.

Paint

Exterior painted panels are now made of 1/8-inch aluminum, powder-coat painted and oven baked. We believe this to be the finest coating available.

PMG Generator

PMG (permanent magnet generator) provides constant excitation under all conditions. Noise and external electrical influences are eliminated. Exciter surge protection is also provided.

3 Phase Sensing Voltage Regulator

The automatic voltage regulator monitors all three phases (when in three-phase operation). This is provided for unbalanced and non-linear loads. Regulator is provided with isolation transformers for surge protection. The voltage regulator is mounted in a sheet metal housing and has a single 12-pin connector for easy replacement. Set-up and operation instructions are printed on the housing.

Single/Three Phase Selector Switch

Switch is accessed at the rear of generator. It is protected with a clear, weatherproof cover so you can tell if it is in single or three phase before you start the unit.

Dual 400A Breakers

2 - 400 amp breakers, each with its own color coated output panel. Weatherproof glass cover. Optional: one breaker can be made adjustable down to 200 amps. UL and CSA listed.

Large Output Display

In addition to our standard LitePOWER engine and generator display, we've added a large redundant generator output display which has large LED characters that are bright enough to be viewed in direct sunlight.

Automated Operation

As with all of our LitePOWER generators, operation is automated. Here are the instructions printed on the control panel:

- Turn Power On
- Switch To Run

Unique Features of the LitePOWER 220KW Trailer

12-Inch Ground Clearance

Nothing to damage when going over curbs or off road. Overall height with LitePOWER 200KW generator is 108 inches. You can ship package in a conventional trailer with 110-inch clearance.

4 Wheel Independent Suspension with 6 Inches Of Travel

Smother, more controlled ride with less "bucking" of the tow vehicle.

Aluminum 5 Spoke Wheels

A LitePOWER exclusive. They look great and won't rust. Lighter weight reduces unsprung weight for better handling.

Zero Running Gear Maintenance

Wheel bearings are permanently sealed and never need maintenance. Axles are Dexter Torflex made to LitePOWER specifications and have no springs or shackles. Trailing arms are mounted in rubber and never need servicing. They also will not "rattle" and make noise when generator is running.

Stainless Steel Guide Pins

Four locating pins match LitePOWER generator bases. Just lower the generator on and the mounting holes line up perfectly, every time.

Chain Tie Down Points

3/4-inch steel plates with 2-inch diameter holes are welded in 4 places for tying trailer down with chains. Each is located at a "hard point" so that excessive force will not damage trailer. The tie-down points are mounted low so chains will not damage trailer paint.

Adjustable Safety Chains

Length of safety chains can be adjusted by hand without tools and without twisting.

Internal Wiring

All LitePOWER trailers have internal wiring for long lasting reliability. Connection to tow vehicle is via a plug-in cable so that it can be easily replaced or exchanged for different connector configurations.

Replaceable Fenders

Each fender is bolted on with four 3/8"-16 bolts, strong enough for two adults to stand on. Replacement takes minutes.

200-Gallon (NET) Aluminum Fuel Tank

Large center sump for maximum pick-up. Includes inspection ports and a trap for large debris.

10-Gallon Expansion Tank

Another LitePOWER exclusive. Our fuel filler cap is sealed. You can fill the main tank all the way to the top. The expansion tank will capture excess fuel due to thermal expansion and will never leak on the ground.

Electronic Fuel Sending Unit and Gauge

We monitor the fuel level electronically and display percentage of fuel remaining. At 15% the pre-fault lamp is turned on and the fuel level reading flashes. At 0% we shut off the generator. At this point there is still some fuel in the tank. The engine will not run dry and require a technician to restart it.

Paint

Our frames are sand blasted, then powder-coated with a zinc-rich primer and finally re-powder-coated with the finish high gloss color. The fenders are zinc plated and powder-coated with matching color.

The Trunk

A large, covered, locking trunk, which is integrated into the trailer, is large enough for the spare tire, leveling blocks and more.

Available LitePOWER Secondary Containment Rupture Basin

LitePOWER Movie Quiet® 220KW Generator - UNIQUE FEATURES



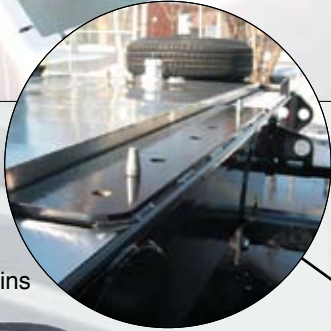
Radiator
Cleaning



Smooth Top



Top with Lifting Hooks Installed

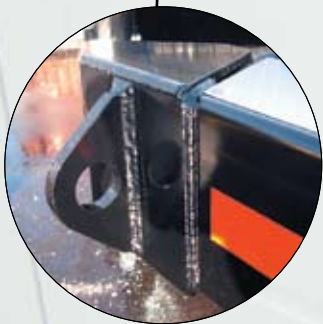


Alignment Pins



220KW Trailer (Optional)

Chain Lift Hooks (Rear)



Chain Lift Hooks (Front)



LitePOWER[®]
Movie Quiet[®] **220KW Generator (1800 Amps)**

Burrell Enterprises, Inc.

toll free: (800) 474-8111 • www.litepower.com